

Bushwhacker

3G  

**WIRELESS
SCOUTING CAMERA**



**Catch the action
with your BIG EYE**

MODEL: BIG EYE G3

- SMS remote control
- SMS notifications
- Sending interval

USER GUIDE

VER.201707

Contents

I.	Introduction.....	1
	1.1 Application.....	1
	1.2 Power source.....	2
	1.3 Memory card.....	3
	1.4 USB functions.....	4
	1.5 Precautions.....	5
II.	Camera structure knowledge.....	7
	2.1 Front structure of the camera.....	7
	2.2 Internal structure of the camera.....	8
III.	Use camera quickly.....	8
	3.1 Start camera quickly.....	9
	3.2 Start 3G mode quickly.....	9
IV.	Menu function table.....	12
V.	Network functions.....	19
	5.1 Remote control operation procedure by SMS.....	19
	5.2 PC client setting.....	23
	5.2.1 Camera parameters setting.....	24
	5.2.2 Network parameter setting.....	25
VI.	Main performance and technical parameters of the product	
	30	
	6.1 Main functions.....	30
	6.2 Technical parameter.....	32

VII.	Other	36
	7.1 "REPLAY" key	36
	7.2 Detailed explanations for partial functions	38
	7.2.1 Timer settings	38
	7.2.2 Language	38
	7.3 Firmware Upgrades	38
	7.4 Frequently Asked Questions.....	39
	7.4.1 Camera cannot start normally	39
	7.4.2 If the camera cannot get the remote picture and information.....	40
	7.5 Factory default settings	40
VIII.	Warranty Policy.....	41
	Appendix I: Corresponding table of length of the video and interval time of taking photos	43
	Appendix II: Standard Packing List.....	44
IX.	Statement	44

V. Introduction

Big Eye G3 wildlife camera (also known as wireless hunting camera / 3G trail cameras) is an wireless infrared detection device with 3G network. It is triggered by pyroelectric infrared sensor (PIR). Any change of environment temperature caused by movement of animals in observation area automatically triggers completion of photographs or video. The detection photos could be sent by the camera to a mobile phone or mailbox via 3G network and remote setting of camera can be achieved by SMS.

1.1 Application

- A. The product can be used by hunting enthusiasts to detect animal and animal infested areas.
- B. Ecological photography enthusiasts, wildlife protection volunteers, etc. can use it for outdoor automatic image shooting.
- C. It can be used for growth observation of wildlife and plants.
- D. It is also installed indoor or outdoor, monitoring home, supermarket, construction site, warehouse, community and other places.
- E. Forestry units, forest police can use the product to detect

stealing and illegal hunting, as well as for evidence obtaining.

F. It can be used in other aspects for evidence collection.



Notes to users:


Please read the instructions carefully before using this product, so as to avoid unnecessary loss!

Do not disassemble the camera arbitrarily. Except for product quality problems, the manufacturer does not take any responsibility for damage caused by users!

1.2 Power source

AA battery or external power adapter shall be used for power supply to this product.


A. Battery-powered: Please use high quality alkaline battery, Ni MH battery or rechargeable battery. It supports two sets of battery installed to this camera, 4 batteries in each set. 8 batteries are advised to install, so as to improve the performance of the camera.

 **Note:** The users need to purchase battery themselves. Please

pay attention to the positive and negative electrode of the battery in installation. When you do not use the camera for a long time, please take out the battery, to avoid any damage to camera caused by liquid leakage. When battery capacity is low, please replace them in time.

B. External power supply:

This product supports 6V/2A DC power adapter, solar power, etc.

 **Note:** *When battery capacity is low, under the "TEST" mode, there will be a low power prompt shown on the screen (the battery icon at lower right corner will be displayed as empty and red "X"); under the "ON" mode, the red indicator light flashes for continuous 60 seconds with interval.*

1.3 Memory card

SD card is used in this camera for image storage, the maximum capacity of 64GB. In order to ensure that the camera can achieve the best performance, please use the SD card of 10 Speed or above; when the camera is turned on, please do not remove the SD memory card, battery and power supply plug!


 **Note:** *Before inserting the SD memory card, it is recommended to format the SD card, to turn off the SD card lock protection, and to insert the SD memory card correctly according to the logo. The following table lists of the maximum photo numbers and the length of the video by different capacity SD cards (the value is for reference only). You can choose to buy the appropriate SD card of different capacity based on your requirement.*

Image amount stored in SD cards with different capacity.						
	2GB	4GB	8GB	16GB	32GB	64GB
Photo number (piece)						
3MP	1644	3320	6746	13234	28055	53752
5MP	1026	2072	4212	8262	17514	33557
8MP	647	1307	2656	5210	11054	21162
12MP	424	856	1740	3414	7238	13868
16MP	320	646	1314	2578	5465	10471
Video length(hour)						
1080P	00:16:16	00:32:56	01:07:00	02:11:33	04:38:55	08:14:01
720P	00:34:35	01:09:53	02:22:05	04:38:53	09:51:12	16:05:20
WVGA	00:44:34	01:30:04	03:03:06	05:59:20	12:41:44	19:52:56
VGA	00:52:06	01:45:15	03:33:58	06:59:54	14:50:05	22:32:22
10-second video quantity (segment)						
1080P	97	197	402	789	1673	2964
720P	207	419	852	1673	3547	5792
WVGA	267	540	1098	2156	4570	7157
VGA	313	631	1283	2519	5340	8114

1.4 USB functions


This product can be connected to computer or TV with USB

interface.

The camera is connected with the USB interface of the computer through the USB data line, the camera display screen displays the USB connection symbol, and the operation key is invalid.

Find the removable disk in "my computer", which could be used to read and write SD card in the camera through the computer.

Note: When the camera is in the OFF mode of shutdown and without other power supply, USB connection is still operational.

When the camera is successfully connected to the RCA via the TV cable, and switched to the "TEST" mode for test preview, and "REPLAY" is selected, the image files in the camera can be browsed in TV.  **Note:** *When the TV is connected, the camera display screen will be automatically turned off!*

1.5 Precautions

- A. Under the "TEST" mode, the camera will automatically shut down when there is no any key operation. If you want to continue to use, please turn on the switch function key again to the "TEST" mode. Users can set timing for automatic shutdown of camera.
- B. When the software is upgrading, please ensure there is no power cutoff. After the completion of upgrade, there shall be at least 5 seconds maintained after the shutdown or

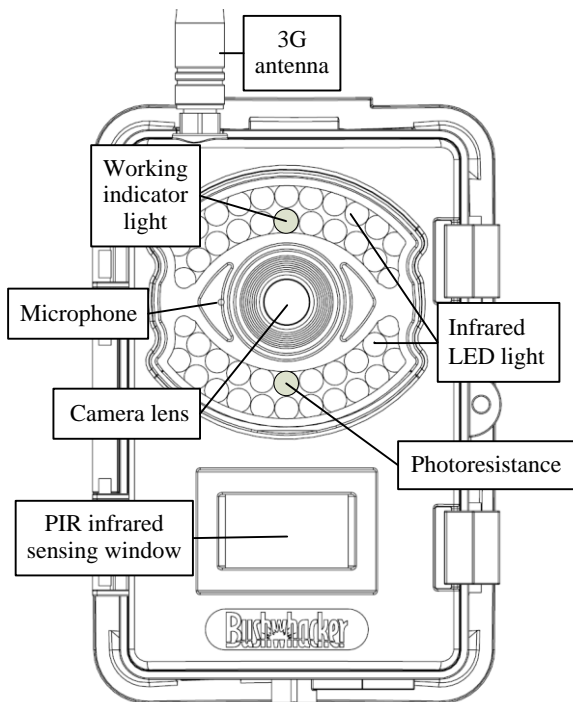
power off, otherwise it may lead to the failure of upgrade. If the upgrade failed, it may continue to upgrade again.

- C. When installing the camera, please ensure there is no moving object 3 meters range in front of camera, such as tree branches, leaves, weeds, ropes, ribbon and other objects fluttering in the wind, so as not to cause the camera to continuously take pictures by mistake.
- D. Please do not keep the camera close to the heat source of large boiler, air conditioning exhaust, lighting, etc., so as not to cause the camera to take pictures by mistake.
- E. Please do not use any voltage or current value which does not meet or exceed the requirements for the external power supply, to avoid damage to the camera.
- F. There is a battery to maintain the clock in the camera, for time and date setting which will keep working until dead battery. The date and time settings resume factory settings after power failure. And after powering on at each time, it is needed to reset the time and date.
- G. Under the test mode, when the network is searched, the display screen will be turned off, at the same time, the red and blue working indicator lights flash. When the search is completed, the display screen of the camera will be turned

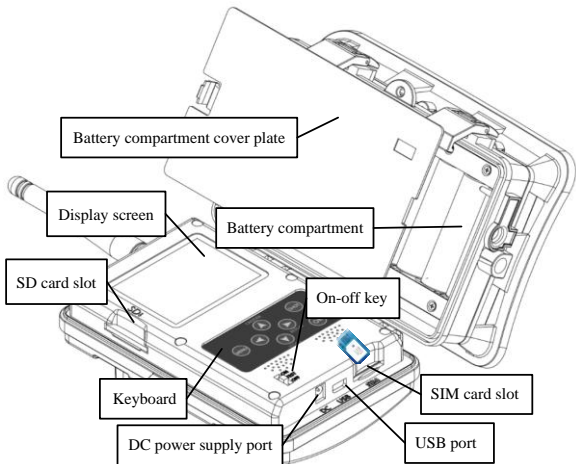
on again, showing the network signal strength in the lower left corner of the screen.

VI. Camera structure knowledge

2.1 Front structure of the camera



2.2 Internal structure of the camera



VII. Use camera quickly

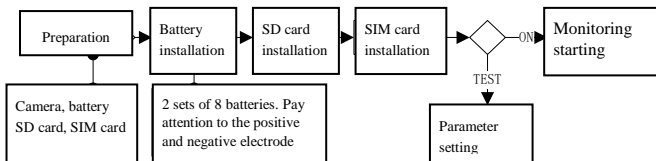
Power switch:

1. When turning to ON, the camera enters into the work mode (before entering into the work mode, the red work indicator light flashes for 6 times, the blue light for the 3 times)

2. When turning to TEST, the camera enters into the test mode, and you can manually set all the parameters, or take photos or videos, or display photos and videos stored in memory card.

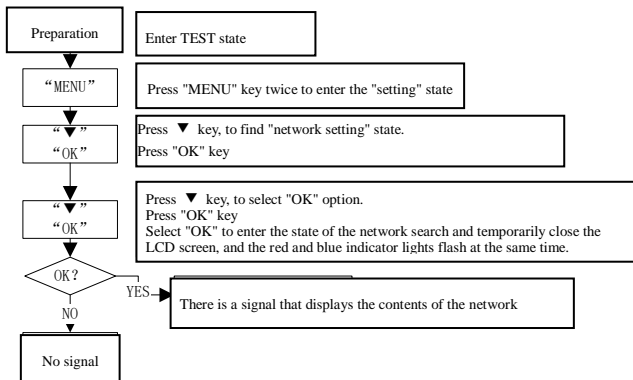
3. When turning to OFF, the camera stops operation.

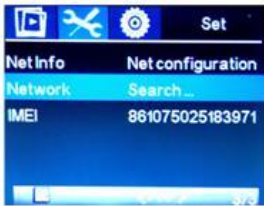
3.1 Start camera quickly



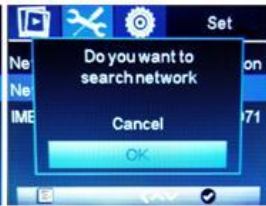
3.2 Start 3G mode quickly

1. Check network signal

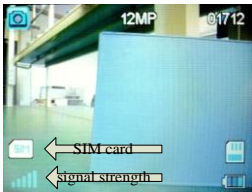




Network search



Confirm to start network search



SIM card intact, good signal



No SIM card found, no signal

If the signal is not normal, please send the Debug file.txt file in SD card back to the manufacturer for troubleshooting.

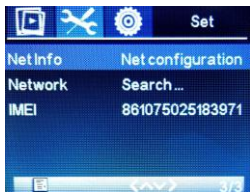
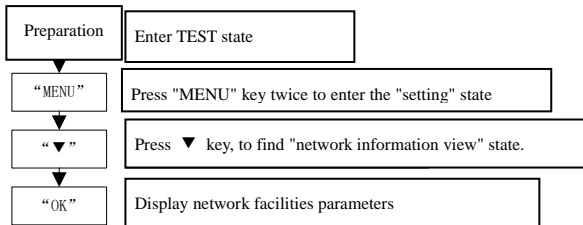
2. Network standard strength

Network standard is displayed in the camera as: (transmission speed from low to high)

- G GSM
- U UTRAN
- E GSM W/EGPRS
- D UTRAN W/HSDPA
- W UTRAN W/HSDPA
- H UTRAN W/HSDPA and HSUPA



3. Check the network setting parameters



Network information view

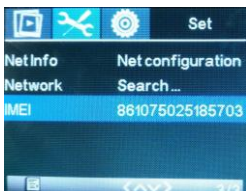


Network information display

When it is completed, the power switch is turned to the "ON", and the lock is buckled, the camera is in 3G mode.

4. Check communication module IMEI

Communication module IMEI code can be queried on the menu. At the first time for using, it is only displayed after searching network.



VIII. Menu function table

Press "MENU" key to enter into cyclic menu. Press ▲ or ▼ key to move the cursor to select a variety of function options. Press ◀ and ▶ keys to switch parameters. Press "OK" key for confirmation. Press "REPLAY" key to enter playback mode. Press "EXIT" key to return to previous menu or exit the menu.

Bold text in the table is the default value.

When the power switch is turned to "TEST", you can select the network research in the menu, which can confirm the current strength of the network signal. When there is no signal or failure of network search, it is proposed to change the camera position, plug SIM card again, and check whether the SIM card has arrears.

Parameter	Setting option (Bold = factory default)	Function description
Image		
Mode	Camera / Video / Camera + Video	"Camera + Video" is to take continuous photos according to the preset number of photo

		shooting, followed with video shooting at the preset length on the same target.
Image Size	3MP/5MP/8MP/ 12MP/16MP	High resolution can improve the definition of the photo, but it will take up more storage space, more time for file storing.
Video Size	VGA/WVGA/ 720P/ 1080P	High resolution can improve the definition of the video, but it will take up more storage space, with the longer file storage time.
Shooting No.	1/2/3/4/5/6	For each shooting, picture number of continuous capture is based on values set by users. <i>Note: When the photo resolution is 16MP, only 3 consecutive pictures can be taken at the maximum.</i>
Video	5 seconds /10 seconds /15	The video in MOV format can

Length	seconds /20 seconds /30 seconds /45 seconds /1 minute /2 minutes /3 minutes /5 minutes /10 minutes	be played in the most video players.
Set		
Device No.	BUSH	4 characters; each character can be selected optionally from 0-9, A-Z. The equipment number becomes the first 4 characters of image file name. When viewing pictures, it can help users identify the camera used to shoot pictures.
Timer	Off/On	It is used to set the working time of the camera. Beyond the time set, the camera will not work. See 7.2.1 for details
PIR Interval	Off/ 3 seconds /5 seconds /10 seconds /15 seconds /30 seconds /1 minute /2	When the shooting is triggered, the camera will no longer be triggered during the

	minutes /5 minutes /10 minutes / 20 minutes /30 minutes /1 hour	PIR interval. After this period, the PIR will resume the waiting state to be triggered.
Time Lapse	Off /5 seconds /10 seconds /15 seconds/ 30 seconds /1 minute /2 minutes /5 minutes /10 minutes/ 20 minutes /30 minutes /1 hour /2 hours /6 hours /12 hours /18 hours /24 hours	The camera could be set for timing shooting during set time interval. <i>Note: Once this function is turned on, the camera will not start infrared automatic sensing for shooting.</i> <i>* Refer to Appendix I</i>
Stamps	Off/On	If it is turned on, there will be a LOGO, temperature, moon phase, date, time displayed below on each picture.
Power Saving	Off/On	If it is turned on, there will be only 20 fill-in lights working in the camera, with low PIR level.
Auto Power Off	1 minute /3 minutes /5 minutes /10 minutes	Auto power off at fixed time if no keypad controlling.

Record Sound	Off/ On	If it is turned on, there is sound record with video.
PIR Level	Low / Normal / High	The user can set the PIR sensitivity based on needs.
Sending Interval	Off/ instant /5 seconds /10 seconds /15 seconds /30 seconds /1 minute /2 minutes /5 minutes /10 minutes / 20 minutes /30 minutes /1 hour	Once a photo is shot, if the camera does not take another photo within the set time interval, the camera will send the photo (by Email or MMS) or message (under the SMS mode) according to the set time interval; When it is turned off, pictures will not be sent out. Note: In the case of low voltage, the camera cannot start the 3G module; this will cause failure in picture sending. When the time lapse is selected, the immediate sending can be set by default

		<p>automatically. The "OFF" is selected; network function will be turned off too.</p>
Net Info	Net configuration	<p>Press "OK" key to display information of current network mode, receiving phone number, operator, server mailbox, server port, sending mailbox, sending mailbox password, receiving and CC e-mail address, etc.</p>
Network	Search	<p>After pressing "OK" key, the screen will show the menu. Select "OK" option, the screen display will be turned off and the mobile will search the network signal at the location of the camera. After searching, the screen will be turned on again and signal strength is displayed at lower left screen</p>

IEMI		Display the IEMI code for the current network module
System		
Formatting	SD card	Format SD card
Set Clock	2017/01/01 00:00	Set system time of the camera.
Default Set	Factory	Restore all settings to factory defaults.
Language	English	Support multiple languages: See 7.2.2 language
Beep Sound	Off/On	Turn on or off the key sound.
Loop Recording	Off/On	When the SD card is full, it will automatically overwrite the previous file.
TV Mode	PAL/NTSC	When the camera is connected to the TV, set the local TV broadcast system.
Password Set	1234	4 characters, arbitrarily selected in 0-9. Please contact your dealer in the case of password loss.

Software Ver.	G3__01_6.1.01	G3: Camera model; 01: Language Section; 6.1: Software version number; 01: Customized software version number.
Playback		
Delete	Delete current / delete all	Delete single one or all images
Protect	Lock current / unlock current / lock all / unlock all	Locked image cannot be deleted. Only after unlocking, it could be removed. Used to protect important images, and avoid accidental deletion.
Slide Show	3 seconds /5 seconds /8 seconds	Interval for auto play of images. The camera will display the slide time as set interval.

IX. Network functions

5.1 Remote control operation procedure by SMS

All parameter setting begins with "#" for separation, "=" followed with parameters, "*" at the end.

S/N	SMS instruction	SMS sample
-----	-----------------	------------

1	Pattern: Photo (1), video (2), photo + video (3)	#01=1*
2	Image Size: 3MP(1),5MP(2),8MP(3),12MP(4),16MP (5)	#02=1*
3	Video size 720P(1),1080P(2), VGA(3), WVGA(4)	#03=1*
4	The number of continuous shooting: 1 unit (1), 2 units (2), 3units (3), 4 units (4), 5 units (5), 6 units (2)	#04=1*
5	Video length: 5 seconds (1), 10 seconds (2), 15 seconds (3), 20 seconds (4), 30 seconds (5), 45 seconds (6), 1minute (7), 2 minutes (8), 3 minutes (9), 5 minutes (10), 10 minutes (11)	#05=1*
6	Name of equipment Letters (26 pcs), numbers (10 pcs)	#06=aaaa*
7	Timing 1: Close-->#07: -: *	#07=12:00-12:30*
8	Timing 2: Close-->#08: -: *	#08=01:30-01:40*

9	PIR dormancy: 3 seconds (1), 5 seconds (2), 10 seconds (3), 15 seconds (4), 30 seconds (5), 1 minutes (6), 2 minutes (7), 5 minutes (8), 10 minutes (9), 20 minutes (10), 30 minutes (11), 1 hour (12), off (13)	#09=1*
10	Interval shooting: 3 seconds (1), 5 seconds (2), 10 seconds (3), 15 seconds (4), 30 seconds (5), 1 minute (6), 2 minutes (7), 5 minutes (8), 10minutes (9), 20 minutes (10), 30 minutes (11), 1 hour (12), 2 hours (13), 6 hours (14), 12 hours (15), 18 hours (16), 24 hours (17), turn off (18)	#10=1*
11	Figure stamp: On (1), Off (2)	#11=1*
12	Power saving mode: On (1), Off (2)	#12=1*
13	Automatic shutting-down: 1 minute (1), 3 minutes(2), 5minutes (3), 10minutes (4)	#13=1*
14	Voice Recording: On (1), Off (2)	#14=1*
15	PIR-level: Low (1), normal (2), high (3)	#15=1*

18	Key sound: On (1), Off (2)	#18=1*
19	Loop record On (1), Off (2)	#19=1*
20	TV Output: PAL (1), NTSC (2)	#20=1*
21	Password setting: Letters (26 pcs), numbers (10 pcs)	#21=1234*
22	Network mode: Turn off (0), SMS (1), email (2), MMS (3)	#22=0*
23	Receiving phone number:	#23=12345678901*
32	Receiving mailbox:	#32=xxx@gmail.com*
33	CC mailbox:	#33=xxxx@gmail.com*
35	Image format: 1 (original), 2 (thumbnail)	#35=1*
36	SMS mode: 1 On, 2 Off	#36=1*
38	Transmission interval: Immediately (1), 5 seconds (2), 10 seconds (3), 15 seconds (4), 30 seconds (5), 1 minutes (6), 2 minutes (7), 5 minutes (8), 10 minutes (9), 20 minutes (10), 30 minutes	#38=1*

- After the camera is set with remote SMS, when the camera restarts next time, a message will be sent to the mobile phone.
- Safety SMS function: In the induction mode, following a normal shooting and sending if there is no other shooting in the next 12 hours, then the camera will send a message to inform the current state of the camera (including: time, energy, remaining storage capacity) to receiving mobile phone number.

5.2 PC client setting

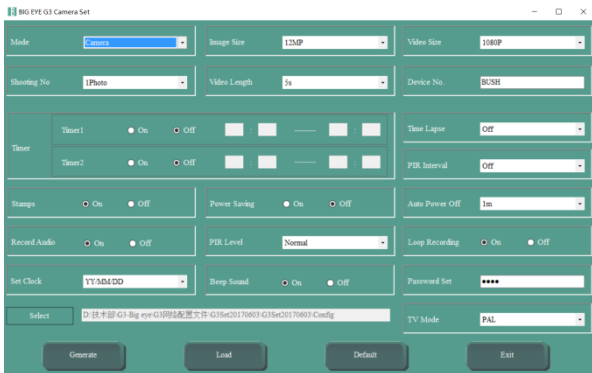
PC client application can be downloaded from the website of our dealers, without need for installation. Just download and decompress the G3set.exe program to run. The SIM card in the camera must support WCDMA 3G pattern.

Please select the appropriate language, camera model for the first interface.



5.2.1 Camera parameters setting

Click the camera settings for the camera parameter settings.



After parameter setting, click on the "directory" to select the file storage address. Click "generate" to generate the camera parameter settings file as "CameraSet.cfg" filename. Click "Exit" to exit the

main menu interface.

Copy the parameter settings file of CameraSet.cfg to the SD card. Insert it to the camera and turn the key to TEST, camera setting is automatically finished.

Load: If the generated parameters are incorrect, click "Load" to select the generated file, you can quickly restore the generated parameters, convenient for modify the parameters again.

Default: Restores default settings.

5.2.2 Network parameter setting

Click the network settings for the network parameter settings.

The screenshot shows the 'BIG EYE G3 Net Set' application window. It is a configuration tool for network parameters. The interface is organized into several sections:

- Left Panel:** Contains a 'Fill Mode' dropdown menu (currently set to 'Manual'), and dropdown menus for 'Country' and 'Operator'. Below these are radio buttons for 'EMail', 'MMS', and 'SMS'.
- Main Configuration Area:** Includes input fields for 'NET APN', 'Send Server' (with an adjacent 'Port' field), 'Send Name', 'Send Password', 'Receive Name', and 'CC Name'.
- Right Panel:** Features radio buttons for 'Picture Type' (Original/VGA) and 'SMS' (On/Off). It also includes 'Send Interval', 'Phone Number', 'MMS APN', 'MMS URL', 'MMS Proxy Address' (with a 'MMS Port' field), 'APN Account', and 'APN Password'.
- Bottom Panel:** Contains a 'Select' dropdown menu showing a file path, and five buttons: 'Generate', 'Load', 'Default', 'Save Default', and 'Exit'.

Select the "automatic" mode to set. After selecting the country, the operator, the software will use the network parameters provided by the system, by entering mailbox, telephone number and other

parameters. Then you can use it. If the parameters provided by the system are incorrect or no option, the user can choose the "manual" mode, to fill in all the network parameters, e-mail, telephone number. For network APN, server used, port, APN account and APN password, please consult local communications operators.

After parameter setting, click on the "directory" to select the file storage address. Click the "generate" to output camera settings file to the directory of the file storage address. Click "Exit" to exit the main menu interface.

Copy the parameter settings file of Camera NetSet.cfg to the SD card. Insert it to the camera and turn the key to TEST, and then the camera automatically sets the parameters.

Load: If the generated parameters are incorrect, click "Load" to select the generated file, you can quickly restore the generated parameters, convenient for modify the parameters again.

Default: Restores default settings.

Dave Default: Save the current settings as defaults, no need to set the parameters next time. If there are any changes, click "Default" to restore the saved settings.

◆ **Email mode parameter settings**

In the network settings menu, select the "EMAIL" option for email mode parameter settings.



After selection of the filling way, country, operators, it is needed to fill in the **NET APN**(Access Point Names), **Send Server**, **Port**, **Send Name** (Mailbox), **Send Mailbox Password**, **Receiving mail**, **CC mail**, **Send Interval**. For sending SMS, you need to fill in phone number. In some countries, it is required to fill in the APN Account, APN Password. If the operator does not require, that two parts can be empty.

By this mode, the photos will be sent to the receiving mailbox by sending mailbox. The default is to send a thumbnail without message notice. If the original images and SMS notification are needed, you can choose to change.

◆ MMS mode parameter settings

In the network settings menu, select the “MMS” option for MMS

mode parameter settings.

The screenshot shows the 'BIG EYE G3 Net Set' configuration window. The interface is divided into several sections. The top left section contains 'Fill Mode' (set to 'Manual'), 'Country', and 'Operator' dropdown menus. Below this is a section with radio buttons for 'EMail', 'MMS' (selected), and 'SMS'. The middle left section contains fields for 'NET APN', 'Send Server' (with a 'Port' field), 'Send Name', 'Send Password', 'Receive Name', and 'CC Name'. The top right section contains radio buttons for 'Picture Type' ('Original' selected, 'VGA' unselected) and 'SMS' ('On' selected, 'Off' unselected). Below this is a 'Send Interval' dropdown menu, a 'Phone Number' field, 'MMS APN', 'MMS URL', 'MMS Proxy Address' (with an adjacent 'MMS Port' field), 'APN Account', and 'APN Password' fields. At the bottom, there is a 'Select' dropdown menu showing a file path and five buttons: 'Generate', 'Load', 'Default', 'Save Default', and 'Exit'.

After selecting the **Country**, **Operator**, it is needed to fill in the **Send Interval**, **Phone Number**, **MMS APN**, **MMS URL**, **MMS Proxy Server**, **MMS port**. In some countries, it is required to fill out the **APN Account**, **APN Password**. If there are no requirements for operators, the two parts can be empty. Please consult local operators for parameters.




Note: In MMS, only thumbnails are sent. SMS is not optional.

◆ SMS mode parameter settings

In the network settings menu, select the SMS option for SMS mode parameter settings.



In this mode, it is required to set the **Country, Operator, Send Interval, Phone Number**. When sending SMS, the set mobile phone number can receive the text information of the image shot by the camera.

 **Note:** *Phone number format is "+8613800138000" or "13800138000".*

After the completion of parameter settings of Email mode, MMS mode, SMS mode, select the "directory" to fill the storage location for generating files, and then click "Generate". Copy the generated NetSet.cfg to the SD card. Insert it to the camera and turn the key to TEST, and camera setting is automatically finished.

X. Main performance and technical parameters of the product

6.1 Main functions

- 1) Picture pixels: 3MP/5MP/8MP/12MP/16MP.
- 2) HD video: 1080P 30 frames per second. The sound of the video can be set on or off.
- 3) In the "camera + video" mode, the camera after being triggered to start every time, the camera will take pictures first and then record a scene video.
- 4) 42 infrared LEDs, in power-saving mode, only 20 infrared LEDs work; 850nm/940nm two kinds of lights are optional.
- 5) Starting speed at 0.5 seconds
- 6) 2.4' TFT color LCD screen.
- 7) Important pictures can be locked to avoid deletion.
- 8) Continuous shooting for 6 pictures.
- 9) You can set a specified period every day for the camera to work. And you can set two timers.
- 10) PIR interval function, can avoid the multi shot for the same object that stays for a long time.
- 11) By time lapse function, the camera will be set at a time interval to take pictures, which is very useful to observe the flowering of plants, birds nest, as well as monitoring unattended places, such as

parking, garden.

12) Auto power off in 1-10 minutes while no keypad controlling.

13) Date, time, temperature, moon phase and battery capacity can be stamped in the picture.

14) 7 operation buttons. The beep sound can be turned on or off.

15) Free choice of TV out at PAL/NTSC.

16) Maximum 64GB SD memory card is supported.

17) Low standby power consumption, up to 6 months of standby time.

18) When power alarms for low battery, there is a low power logo on the screen with a red light flickering.

19) 1~8 zoom playback for viewing.

20) Supportive for nine square pictures browsing and auto play mode.

21) Device number will be showed on image file name, this helps users identify which cameras captured the image when browse files.

22) You can set a password for power-on.

23) Color pictures at daytime, monochrome pictures at night, switched automatically.

24) Supportive for loop recording, which automatically deletes the earliest photos or videos and makes room for new ones.

25) Dentate design on the back is more convenient for camera

mounting.

27) The battery hatchway cover can effectively avoid corrosion damage to camera caused by leakage of battery.

28) Image transmission speed is high, transmit image via SMTP/MMS, network support GPRS / 3G.

29) With SMS notice and remote control functions.

30) Supports thumbnail or original transmission.

31) Can flexibly set images transmission time, can select the instant sending or interval sending.

32) Set parameter on computer, which is more convenient.

33) If no trigger for 12 hours, it will send safe messages (time, electric quantity, storage capacity).

6.2 Technical parameter

Items	Parameter
Work Mode	Camera / Video / Camera+Video
Photo Size	3MP:2048×2536 ; 5MP:2542×1944 8MP:3264×2488 ; 12MP:4032×3024 16MP:4640×3480
Video Size	VGA:640x480; WVGA:800x480 720P:1280x720@30fps; 1080P:1920x1080@30fps
Working Time	Day /night, auto-induction switch

Lens	FOV=90 degree (G3R:50 degree), F=2.4 (G3R:2.5), auto-induction switch filtering
IR Flash Distance	65 feet / 20 m
Infrared Lamp	42pcs; Visible light lamp/invisible light lamp selectable
Power Saving	On/off; Only 20 lights work after opened
LCD screen	2.4 inch, TFT colors, RGB
Operation Keypad	7 buttons
Beep Sounds	On/off
Memory	SD card, maximum support 64GB
PIR Level	High/Normal/Low
PIR Sensing Distance	65 feet / 20 m
PIR Sensing Angle	90 degree (G3R:50 degree)
Trigger Time	0.5 seconds (when use 2 GB card)
PIR Interval	3 seconds ~60 minutes, Programmable
Timer	On/ Off, can set two timers
Time Lapse	5 seconds ~ 24 Hours, Programmable
Shooting Number	1~6 photos (1~3 photos when in 16MP)
Video length	5 seconds~10 minutes, Programmable
Camera + Video	Take photos first, and then record video
Playback Zoom	1~8 times

Slide Show	3 Second/5 Second/8 Second
Loop Recording	On/Off
Lock Image	Locked or unlock image
Stamps	On/Off, Logo, temperature, moon phase, date, time, battery power
Password	4-digit number, each digit can be freely set with 0~9
Device No.	4-digit number, each digit can be freely set with 26 alphabets or 0~9.
Network Band	800/850/900/1900/2100MHz
Email	Two mailboxes can be set. Message notice can be set at the same time. Either original (maximum 16M) or thumbnail (640x480) can be sent.
MMS	Only send thumbnail (640x480)
SMS	Send message notice
Sending Interval	Instant, 5sec~1 hour, Off
Safety Message	No trigger for 12 hours, it will send message (time, electricity quantity, remaining storage capacity) to designated cell phone.
Standby Time	3~6 months (4×AA~8×AA)
Auto Power Off	Automatic shutdown can be set for 1~10 minutes with

	no operation.
Power Source	4×AA, 8×AA
External DC Power Supply	6V/2A
Standby Current	0.4mA
Power Consumption	200mA(+700mA when IR LED lights up) 250mA (start network, maximum peak is 400mA)
Low Battery Alarm	4.8V
Interface	TV-out/USB, SD card slot, 6V DC power port, network antenna, SIM card slot
Mounting	Strap; Tripod nail
Waterproof	IP66
Network Module operating temperature	-40~+85 ℃
Working temperature	-22~+158 ℉/-30~+70 ℃
Working Humidity	5%~95%
Camera Dimensions	147.5×100×77 (mm)
Net Weight	350g
Certified	FCC&CE&RoHS

XI. Other

7.1 "REPLAY" key

"REPLAY" key, with other keys can achieve browsing/playing/deleting of images which have been stored in SD card; Photos can be enlarged /shrunk/moved; Video Sudoku thumbnail; Video lock/unlock; Slides play function.

Image review:

Press "REPLAY" first, in this state, press ◀/▶ key to browse photos and videos in SD card.

Scale, move photos and Sudoku:

When browsing photos, press "ZOOM" first, and then press ▲/▼ key to mitigate or amplify photos. When amplified to the minimum, photos will show with Sudoku style.

When amplifying photos, press "MOVE" first, then press ▲/▼/◀/▶ key for details of a picture.

Continuously press "ZOOM/MOVE" key can realize switches among "scale" and "move".

When at the Sudoku state, press ▲/▼/◀/▶ key to move at the selected images quickly, then press "OK" key to look at the selected image.

Video plays:

When browsing video documents, operation instructions will be displayed at the bottom of the screen.

Press "OK" key to play or suspend video.


Press ▲/▼/ key to terminal video playing.

When pressing ", " key, video will speed forward or go back with 2 times, 4times, 8 times of the play speed.

Auto play:

All images will automatically be displayed with slide mode in a continuous loop.


When at "REPLAY" condition, press "MENU" key and select "auto play". Press ◀/▶ key to set auto play time as 3, 5 or 8 seconds.

 **Note:** *In auto play mode, only the first image of a video is displayed, not the whole video.*

Images lock/unlock:

May lock the selected images, which cannot be deleted after locking; only unlocked them first and then deleted.

When at "REPLAY" state, press "MENU" key, choose "image lock" option, press ", "keys to set "lock the present", "unlock the present", "lock all", "unlock all".

 **Note:** *When at "REPLAY" state, the above functions all can be back to the previous level by pressing "EXIT" key, press "CAMERA", "VIDEO" keys will quickly exit "REPLAY" state, switch to camera*

or video recording.

7.2 Detailed explanations for partial functions

7.2.1 Timer settings

Timer function can set cameras to work in particular times, beyond these times the camera is in dormant state. Two time settings can be made.

System default the timer:

Off, “00:00—00:00”

Off, “00:00—00:00”

Example: Set camera to operate at 8:00 to 10:00 am and 15:30 to 18:00 pm every day, the set is as follows:

On, “08:00—10:00”

On, “15:30—18:00”

7.2.2 Language

System language, users may choose, according to the language of his country, the corresponding language version to purchase.

"English" is the system default language. Users may acquire the language version number from official website.

7.3 Firmware Upgrades

Manufacturer reserve the right of upgrading the product hardware

and software. User may update camera software version through SD card (SD card capacity shall less than 32GB).

Please conduct firmware upgrade of product with the following procedures:

1. Prepare a formatted SD card;
2. Copy the new version software document named "FWD3A.bin" to SD card root catalog.
3. Insert SD card into camera, dial ON/OFF key to TEST mode while pressing OK key, loosen "OK" key when the blue indicator light is flashing;
4. The blue light flashes continuously and the screen is off, indicating that the upgrade is in progress. Please don't power off! Such as power off, you must re-insert the upgrade software SD card, re-power, and dial the "open key" to "TEST" test preview mode.
5. Reboot and see if the new version number is in accordance with the version number before upgrading, to determine if the upgrade is successful.

7.4 Frequently Asked Questions

7.4.1 Camera cannot start normally

- No batteries;
- Batteries are not installed correctly;
- Run out of battery;
- Batteries do not comply with specifications;

- Not tune function switch to ON state yet;
- Not insert SD card yet;
- SD card is full loaded or damaged.
- SD card capacity has surpassed the maximum support capacity 64GB;
- PIR sensor sensitivity setting grade is too low.

7.4.2 If the camera cannot get the remote picture and information

- SIM card contact is bad, the installation is not in place;
- SIM card has no sufficient funds;
- The location has no signal;
- Battery capacity is insufficient;
- Network setting parameters are incorrect;
- Turn off interval sending time duration option.

7.5 Factory default settings

Camera factory settings parameter		
Image		
	Shooting Mode	Camera
	Photo Size	12MP
	Video Size	1080P
	Shooting No.	1
	Video Length	5 seconds
Setting		
	Device No.	BUSH

	Timer	Off
	PIR Interval	3 seconds
	Time Lapse	Off
	Stamps	On
	Power Saving	Off
	Auto Power Off	1 minute
	Record Audio	On
	PIR Level	Normal
	Sending Interval	10 minutes
	Network Info	Network configuration
	Networks	Search for signal
	IMEI	Identify number of 3G module
System		
	Format	SD card
	Date and Time:	2017/01/01 00:00
	Default Set	Factory
	Language	English
	Beep Sound	On
	Loop Recording	On
	TV Mode	PAL Mode
	Password set	1234
	Software Ver.	G3 01 6.1.01

XII. Warranty Policy

We value our customers very highly and would like to ensure that our products and service are always of a top standard. However, if you are experiencing issues with your Bushwhacker products, please take a moment to read through the information below to establish

whether your products are covered under the warranty.

WARRANTY

We guarantee our Bushwhacker cameras to be free of defects in materials and workmanship under normal use and service for a period of a limited times after registered date of purchase.

EXCLUSIONS

This warranty does not cover damages caused by misuse, abuse, improper handling or installation, or improper storage conditions and natural disasters, by user installed batteries, or by repair attempts of someone other than our authorized technicians, nor does cover loss or theft.

This warranty extends solely to failures due to defects in materials or workmanship under normal use. It does not cover normal wear of the product. The camera manufacturer can provide extra service for your camera after the warranty expiration, but the customer have to be responsible for extra charges on parts, labor and shipping costs therefore brought.

Please keep the warranty card for guarantee to keep in repair.

Please contact the regional distributor for more details.

XIII. Appendix I: Corresponding table of “video length” and “time lapse” of taking photos

- In video mode, the optional shortest duration of time lapse depends on the length of the video.

The interval starts from the beginning of video length.

Video Length	Time Lapse (The shortest duration)
5s	15s
10s	30s
15s	30s
20s	30s
30s	1m
45s	1m
1m	2m
2m	5m
3m	5m
5m	10m
10m	20m

XIV. Appendix II: Standard Packing List

Component name	Quantity
Camera	1
USB cable	1
Aerials	1
TV Connecting wire	1
Installation bandage	1
Operating Instructions	1
Warranty Card	1

XV. Statement

1. The manufacturer reserves the right to make corrections at any time to the contents of this manual due to inconsistencies in editing / typographical errors and product upgrades and includes modification in new version of the manual. These amendments are without notice.
2. The manufacturer is not responsible for any illegal use; please comply with local legal permission.
3. The manufacturer is not responsible for any data loss of the user.
4. The manufacturer is not responsible for any damages or casualties caused by the user's misuse of the product.